



Test Report

No. SH9206767/CHEM

Date: Oct. 30, 2009

Page 1 of 3

The following sample(s) was/were submitted and identified by/on behalf of the client as:

Sample Name : SHORT GLOVE:PINK,WHITE  
 SGS Ref No. : SHT002922740  
 Buyer : COXLURES INC  
 5448 US HWY 93S CONNER,MT59827,USA  
 Item No. : GL0902  
 Supplier : [REDACTED]  
 Manufacturer : [REDACTED]  
 Country of Origin : CHINA  
 Country of Destination : USA

Sample Receiving Date : Oct.27,2009  
 Testing Period : Oct.27-30,2009

Test Requested : For compliance with Public Law 110-314 (Consumer Product Safety Improvement Act of 2008, CPSIA):-  
 1) Lead in accessible substrate materials

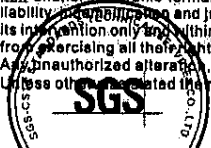
Test Method/Test Results: Please refer to next page(s).

Result Summary :

| Item | Test Parameter  | Conclusion |
|------|---|------------|
| 1    | CPSIA section 101(a)(2) - Lead in accessible substrate materials (including Children's Metal Jewelry) | PASS       |

Signed for and on behalf of  
 SGS-CSTC Chemical Laboratory

Sandy Hao  
 Lab Manager





## Test Report

No. SH9206767/CHEM

Date: Oct. 30, 2009

Page 2 of 3

## Test Results:

1) Lead in accessible substrate materials(Unit:%)

Method (non-metallic materials): CPSC Test Method: CPSC-CH-E1002-08 'Standard Operation Procedure for Determining Total Lead (Pb) in Non-Metal Children Product'

| Test item | 2+3  | 5+6  | Permissible Limit** |
|-----------|------|------|---------------------|
| Lead (Pb) | ND   | ND   | 0.03                |
| Comment   | PASS | PASS | ---                 |

\*\* The requirements for lead in substrate in children's products is summarized below

| Scope                        | Requirement | Effective date |
|------------------------------|-------------|----------------|
| Lead in accessible substrate | ≤ 0.03 %    | 14 August 2009 |
|                              | ≤ 0.01%     | 14 August 2011 |

## Note:

1. % = percentage by weight
2. 1% = 10000ppm (mg/kg)
3. ND = not detected
4. Method Detection Limit = 0.002 %
5. The result is calculated using the minimum sample weight
6. Composite test has been performed as per the special request of client

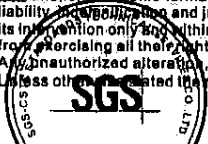
| Test item | 1    | 4    | Permissible Limit** |
|-----------|------|------|---------------------|
| Lead (Pb) | ND   | ND   | 0.03                |
| Comment   | PASS | PASS | ---                 |

\*\* The requirements for lead in substrate in children's products is summarized below

| Scope                        | Requirement | Effective date |
|------------------------------|-------------|----------------|
| Lead in accessible substrate | ≤ 0.03 %    | 14 August 2009 |
|                              | ≤ 0.01%     | 14 August 2011 |

## Note:

1. % = percentage by weight
2. 1% = 10000ppm (mg/kg)
3. ND = not detected
4. Method Detection Limit = 0.002 %



# SGS

## Test Report

No. SH9206767/CHEM

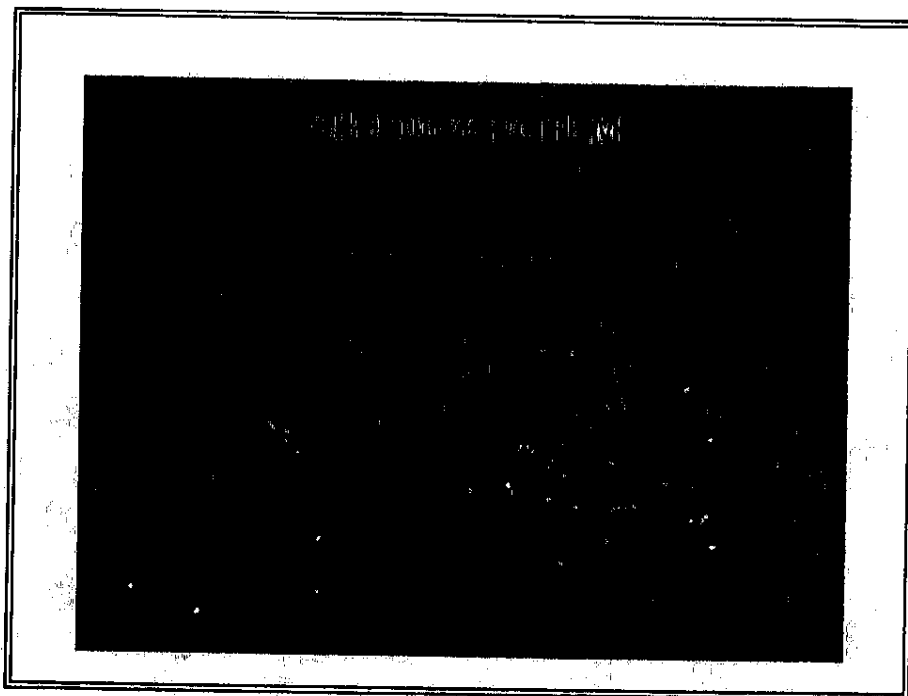
Date: Oct. 30, 2009

Page 3 of 3

### Test Part Description:

1. silvery plastic thread
2. white feather
3. pink feather
4. white thread
5. white fabric
6. pink fabric

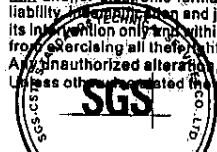
Sample photo:



SGS authenticate the photo on original report only

\*\*\* End of Report \*\*\*

This document is issued by the Company subject to its General Conditions of Service printed overleaf, available on request or accessible at [http://www.sgs.com/terms\\_and\\_conditions.htm](http://www.sgs.com/terms_and_conditions.htm) and for electronic format documents, subject to Terms and Conditions for Electronic Documents at [www.sgs.com/terms\\_e-document.htm](http://www.sgs.com/terms_e-document.htm). Attention is drawn to the limitation of liability, jurisdiction and jurisdiction issues defined therein. Any holder of this document is advised that information contained hereon reflects the Company's findings at the time of its intervention only and within the limits of Client's Instructions. If any, The Company's sole responsibility is to its Client and this document does not exonerate parties to a transaction from exercising all their rights and obligations under the transaction documents. This document cannot be reproduced except in full, without prior written approval of the Company. Any unauthorized alteration, forgery or falsification of the content or appearance of this document is unlawful and offenders may be prosecuted to the fullest extent of the law. Unless otherwise stated, the results shown in this test report refer only to the sample(s) tested.



SHCHEM 20091030