



Test Report

No. SH9206769/CHEM

Date: Oct. 30, 2009

Page 2 of 5

Test Results:

1) Lead In accessible substrate materials(Unit:%)

Method (non-metallic materials): CPSC Test Method: CPSC-CH-E1002-08 'Standard Operation Procedure for Determining Total Lead (Pb) in Non-Metal Children Product'

Test item	1+2+3	4+5+6	Permissible Limit**
Lead (Pb)	ND	ND	0.03
Comment	PASS	PASS	---

Test item	7+8+9	10+11+12	Permissible Limit**
Lead (Pb)	ND	ND	0.03
Comment	PASS	PASS	---

** The requirements for lead in substrate in children's products is summarized below

Scope	Requirement	Effective date
Lead in accessible substrate	≤ 0.03 %	14 August 2009
	≤ 0.01%	14 August 2011

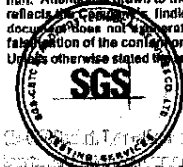
Note:

1. % = percentage by weight
2. 1% = 10000ppm (mg/kg)
3. ND = not detected
4. Method Detection Limit = 0.002 %
5. The result is calculated using the minimum sample weight
6. Composite test has been performed as per the special request of client

Test Part Description:

1. dark brown wool
2. black wool
3. green wool
4. yellow wool
5. orange wool
6. beige wool
7. purple wool
8. white wool
9. red wool
10. hot pink wool
11. blue wool
12. pink wool

This document is issued by the Company under its General Conditions of Service printed overleaf or available on request and accessible at http://www.sgs.com/terms_and_conditions.htm. Attention is drawn to the limitation of liability, indemnification and jurisdiction issues defined therein. Any holder of this document is advised that information contained hereon reflects the Company's findings at the time of its intervention only and within the limits of Client's instructions, if any. The Company's sole responsibility is to its Client and this document does not liberate parties to a transaction from exercising all their rights and obligations under the transaction documents. Any unauthorized alteration, forgery or falsification of the content or appearance of this document is unlawful and offenders may be prosecuted to the fullest extent of the law. Unless otherwise stated the results shown in this test report refer only to the sample(s) tested. This document cannot be reproduced except in full, without prior approval of the Company.





Test Report

No. SH9206769/CHEM

Date: Oct. 30, 2009

Page 3 of 5

Sample photo:



This document is issued by the Company under its General Conditions of Service printed overleaf or available on request and accessible at http://www.sgs.com/terms_and_conditions.htm. Attention is drawn to the limitation of liability, indemnification and jurisdiction issues defined therein. Any holder of this document is advised that information contained hereon reflects the Company's findings at the time of its intervention only and within the limits of Client's instructions, if any. The Company's sole responsibility is to its Client and this document does not separate parties to a transaction from exercising all their rights and obligations under the transaction documents. Any unauthorized alteration, forgery or falsification of the content or appearance of this document is unlawful and offenders may be prosecuted to the fullest extent of the law. Unless otherwise stated, the results shown in this test report refer only to the sample(s) tested. This document cannot be reproduced except in full, without prior approval of the Company.



SGS (Shanghai) Technical Services Co., Ltd. 3rd Building, No. 889, Yishan Road, Shanghai, China 200233 TEL: (86-21) 61402553 FAX: (86-21) 64953679 www.cn.sgs.com
中國·上海·宜山路889號3号楼 郵編: 200233 HL: (86-21) 61402594 HL: (86-21) 54500353 sgs.china@sgs.com

Member of the SGS Group (SGS SA)

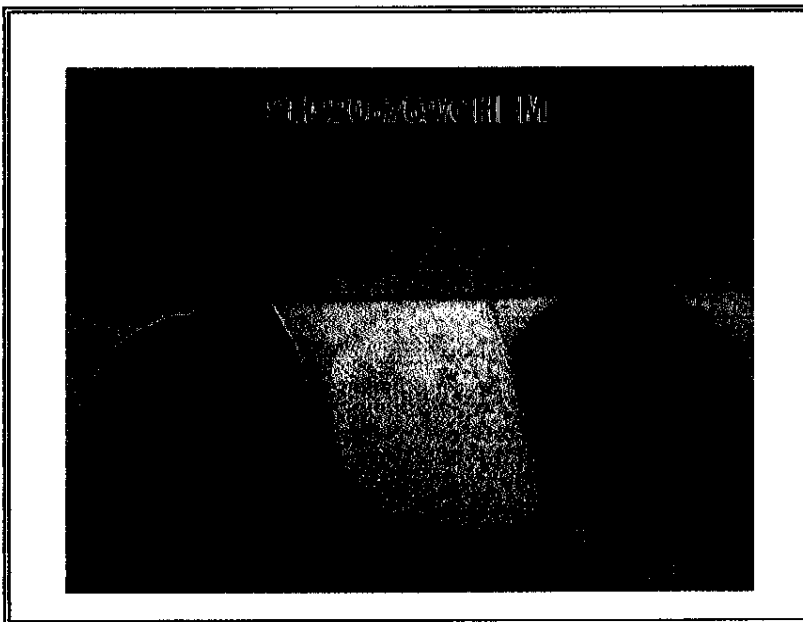
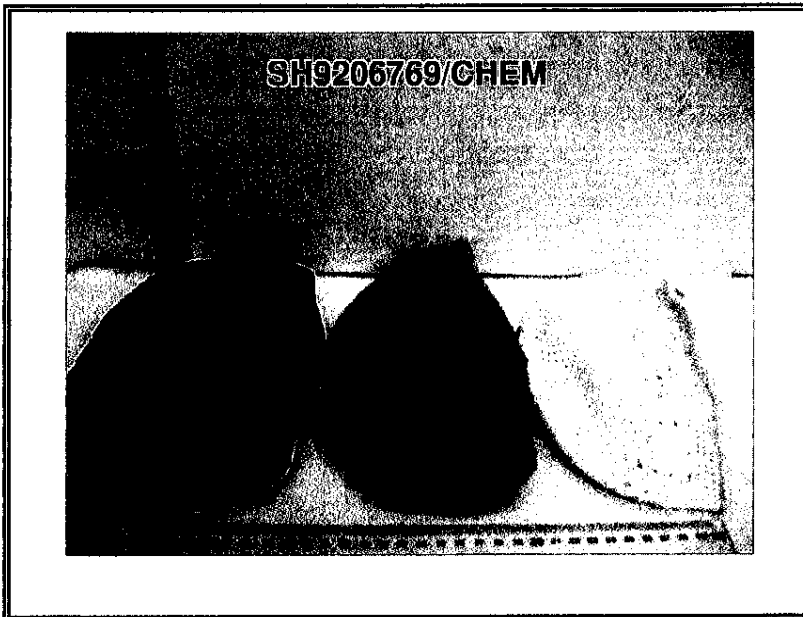


Test Report

No. SH9206769/CHEM

Date: Oct. 30, 2009

Page 4 of 5



This document is issued by the Company under its General Conditions of Service printed overleaf or available on request and accessible at http://www.sgs.com/terms_and_conditions.htm. Attention is drawn to the limitation of liability, indemnification and jurisdiction issues defined therein. Any holder of this document is advised that information contained hereon reflects the Company's findings at the time of its intervention only and within the limits of Client's instructions, if any. The Company's sole responsibility is to its Client and this document does not exonerate parties to a transaction from exercising all their rights and obligations under the transaction documents. Any unauthorized alteration, forgery or falsification of the content or appearance of this document is unlawful and offenders may be prosecuted to the fullest extent of the law. Unless otherwise stated the results shown in this test report refer only to the sample(s) tested. This document cannot be reproduced except in full, without prior approval of the Company.



3rd Building, No. 889, Yishan Road, Shanghai, China 200233 IE&E (86-21) 61402553 IE&E (86-21) 64053678 www.cn.sgs.com
 中國·上海·宜山路889號3樓 郵編: 200233 HL(86-21) 61402594 HL(86-21) 54500353 sgs.china@sgs.com

Member of the SGS Group (SGS SA)

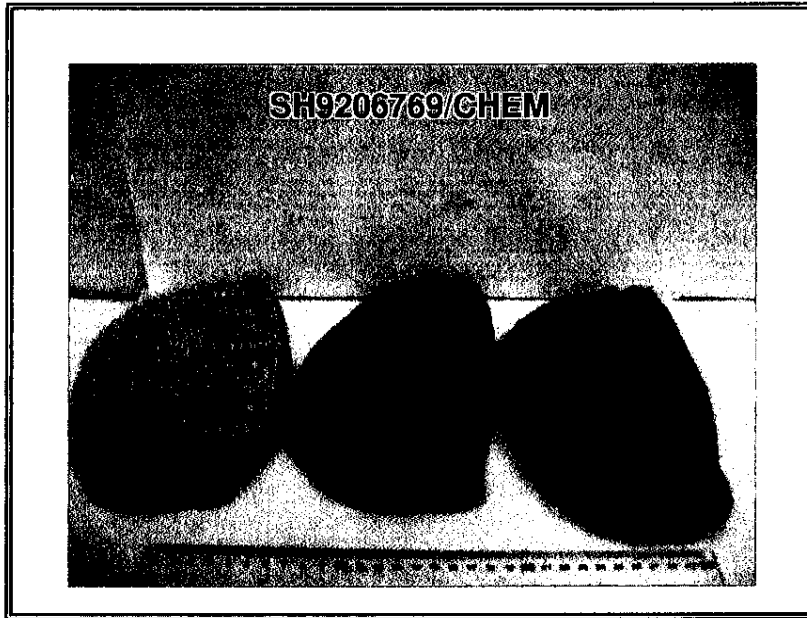


Test Report

No. SH9206769/CHEM

Date: Oct. 30, 2009

Page 5 of 5



SGS authenticate the photo on original report only

*** End of Report ***

This document is issued by the Company under its General Conditions of Service printed overleaf or available on request and accessible at http://www.sgs.com/terms_and_conditions.htm. Attention is drawn to the limitation of liability, indemnification and jurisdiction issues defined therein. Any holder of this document is advised that information contained hereon reflects the findings at the time of its intervention only and within the limits of Client's instructions, if any. The Company's sole responsibility is to its Client and this document does not exonerate parties to a transaction from exercising all their rights and obligations under the transaction documents. Any unauthorized alteration, forgery or falsification of the content or appearance of this document is unlawful and offenders may be prosecuted to the fullest extent of the law. Unless otherwise stated, the results shown in this test report refer only to the sample(s) tested. This document cannot be reproduced except in full, without prior approval of the Company.



3rd Building, No. 888, Yishan Road, Shanghai, China 200233 IE&E: (86-21) 61402553 TE&E: (86-21) 64863679 www.cn.sgs.com
中国·上海·宜山路888号3号楼 邮编: 200233 HL: (86-21) 61402594 HL: (86-21) 54500353 e.sgs.china@sgs.com

Member of the SGS Group (SGS SA)